



Connecting people with technology

IMPACT Series Gen 2

#clevertouch | info@clevertouch.com



Key Features

Compatible with Google Workspace and Microsoft 365
You can prepare resources anywhere at any time

Designed for hybrid learning
Students can participate in and out of the classroom

Free apps and software
Cleverstore, LYNX Whiteboard

Screen mirroring for 50 devices
With 6 mobile devices shown on your IMPACT Plus - Clevershare

Full screen digital signage capabilities
ClevertouchLive App

Customise your home screen
With your school's colours, logos, photos and preferred apps and software - ClevertouchLive

Control and troubleshoot remotely
Via MDM Remote Management

Elevated connectivity
Latest generation USB-C for charging and ethernet, plus all other connectivity ports for connecting a range of devices.

Multi-award-winning education solutions for the digital classroom

IMPACT Series Gen 2

Interactive large format display designed for the blended learning environment.



Save time lesson planning with subscription-free software



Send messages, alerts and media to all of your Clevertouch screens remotely.



Screen mirroring with built-in teacher controls



High Precision Technology



Apps for Blended Learning



Making integration and installation easier



Innovation, design, high-quality & functionality
Plus X Award
2020 - Winner



Interactive Display Technology of the Year
AV Awards
2019 - Winner



Installation Best of Show Award at ISE
Best of Show
2020 - Installation Winner



Best of Show Tech & Learning
Best of Show InfoComm
2020 - Winner



Best of Show Installation
Best of Show InfoComm
2020 - Winner



Collaboration Innovation of the Year
AV News
2020 - Winner

IMPACT Plus Gen 2 Available in a range of sizes

55" | 65" | 75" | 86"

Super Wide Sound

45W Max Power for room-filling sound.

4K

True 4K resolution and sharper user experience throughout.

Cloud Accounts

Sync with your Cloud accounts so that you can work anywhere at any time.



High Precision Technology

Our patented Super Glide Touch technology offers the most fluid writing experience on a touchscreen. It's as smooth as writing on a whiteboard - with no lag. With the ability to differentiate between palm-erase, fingertouch, and stylus-writing, there's no need to change settings mid-flow.

Security Matters

We know how important it is to be secure, so we've got lots of options for you to keep control of your device. Clevertouch can run on-or-off the network. Settings, apps and Android can all be disabled. Data can be wiped at the end of a session and the screen can be locked with a secure passcode.



● **New super cool stylus**
Comfort stylus to aid teaching



● **Microphone**
Built-in line array microphone.

● **Cleverstore**
Access hundreds of free teaching apps to make lessons more engaging.

● **Comprehensive Warranty**
No ongoing subscription charges.

● **Infinity Whiteboarding**
Never run out of space with our infinite canvas. With numeracy tools, handwriting-to-text recognition, and the ability to insert images and shapes, all of which can be saved, printed or shared to student devices.

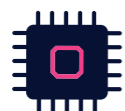
● **Connectivity**
Huge connectivity including the latest USB-C port.

● **Environmentally Friendly Motion Detection**
Equipped with Proximity Sensors your Clevertouch will power off when no one is detected in the room.

What's New?



Zero bonding - no air gap gives greater accuracy, improved performance and vibrant imagery



Android 9 4K Chipset - 6GB RAM / 64GB ROM



Front-mounted latest-generation USB-C - allows switching between any device



Front-facing speakers and subwoofer for clearer, more powerful quality audio



Upgraded 6 array microphone



Ambient light sensor



Front-mounted power button



Front-mounted USB-A port



Optional Extra

Intelligent Camera

Upgrade your IMPACT Plus Gen 2 with an Intelligent Camera

- Slots onto the bottom of your IMPACT Plus Gen 2
- 4K camera gives crystal clear vibrant images and video, capturing the entire room
- Swivel pulley allows you to nudge the pitch angle of your lens
- Security cover included

Sign in with ease

The intelligent camera contains a built-in NFC sensor and a RFID sensor.

Use either an NFC card to sign-in in seconds, giving you access to your favorite apps, your Cloud accounts, and your preferred settings.



Keep track of your environment

For the comfort and safety of your teams, our sensors keep track of air quality, light, temperature and humidity.

Press a button on your IMPACT Plus Gen 2 to instantly see your environmental data.

Coming Soon

View the data of all of your screens via ClevertouchLive. If the environment is not ideal, send an automated message back to your IMPACT Plus Gen 2 with an instruction for the people in the room.

Use the data to better plan for your heating and air conditioning, and save money on unnecessary heating measures. Sync your account with your RFID fob.

IMPACT Gen 2 Available in a range of sizes

65" | 75" | 86"

Audio

2 x 15W speakers for crystal clear sound quality from anywhere in the room.

Remote Management

View, control, update and troubleshoot remotely. Your IT office can work on your Clevertouch screen without needing to come to the classroom. You'll always have the latest versions of apps and software without needing to install any files when you should be teaching.

Cloud Accounts

Sync with your Cloud accounts so that you can work anywhere at any time.



High Precision Technology

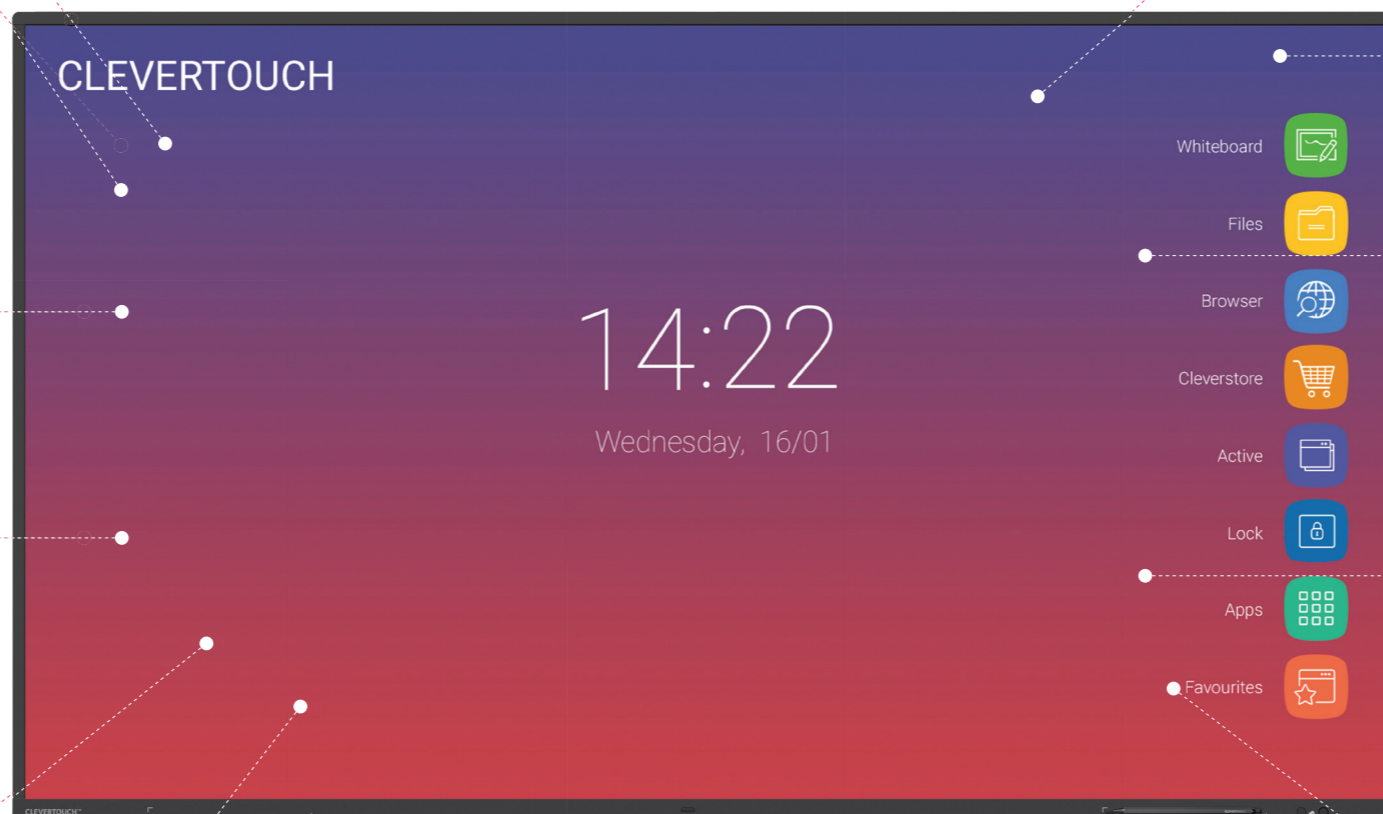
Our patented Super Glide Touch technology offers the most fluid writing experience on a touchscreen. It's as smooth as writing on a whiteboard - with no lag. With the ability to differentiate between palm-erase, fingertouch, and stylus-writing, there's no need to change settings mid-flow.

LUX 8.0

Easy to use interface. Simple, quick, intuitive apps and gestures designed to make everyday tasks seamless.

Clevershare

Screen mirror with images, video and audio.



Cleverstore

Access hundreds of free teaching apps to make lessons more engaging.

Comprehensive Warranty

No ongoing subscription charges.

Infinity Whiteboarding

Never run out of space with our infinite canvas. With numeracy tools, handwriting-to-text recognition, and the ability to insert images and shapes, all of which can be saved, printed or shared to student devices.

Connectivity

Huge connectivity including one of the latest USB-C ports. Allows single cable connection for audio, video and touch.

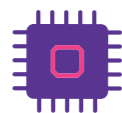
LYNX Whiteboard

Whiteboarding made easy with a huge selection of pen & art tools to choose from.

What's New?



Built-in array microphone - all lessons can be recorded with sound



3GB RAM
32GB ROM



Latest generation USB-C with charging and hardware optimisation

Extras



With the NFC pen tray teachers can be assigned with a fob card that carries all their settings and accounts, so there is no need for a lengthy log-in process





Quick Launch Menu for instant teaching tools

Your most commonly used apps are available with one touch and are easily accessible via the Quick Launch Menu.



The Clevershare App is free to download and compatible with Android, Windows, iOS and Chrome devices. Up to 50 devices can connect with the Clevertouch screen and share content – images, video, and audio. The presenter has full control over what is shared, and can show up to 4 device screens simultaneously, increasing student collaboration and participation within every lesson. Now includes touch-back.



Make notes, diagrams or images, add and scroll through multiple pages, insert an image or change the background colour. Now includes handwriting and formula recognition.



Double click on files to open them, as well as easily copy, cut and paste, so it's just like using a PC. Personal Cloud Storage integration.



Explore the internet without needing a computer, using the IMPACT™, Chrome and Chromium browsers.



Cleverstore contains hundreds of apps in all subjects and a range of languages, including literacy, STEAM and languages. Each app is tested by our team, to make sure no adverts, in app purchases, or inappropriate content gets through. We've partnered with the most popular educational app developers to give you apps that you can really make use of in the classroom.



Easily go back to recently used apps using the Active button with split-screen mode.



Protect your Clevertouch with a password by using Lock.



All of your integrated and Cleverstore apps can be found here.



All your favourite apps in one place, including Settings.



Flexible Messaging Solutions

Exclusive to Clevertouch

ClevertouchLive App: Messaging

With ClevertouchLive App your IMPACT isn't just a screen for teaching or presenting, it's also a communications tool. Use it to broadcast messages, alerts and important information to students, staff and visitors.

- Daily news and activities
- Weekly lunch menu
- Live video messages from the school office
- Emergency announcements and fire drills



Dynamic and integrated

ClevertouchLive: Home Screen

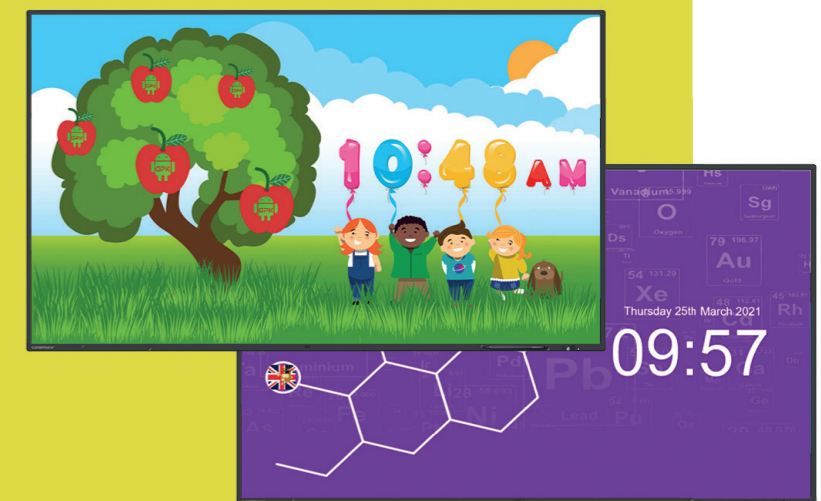
Customise your home screen so it's unique to your school or district. With the ClevertouchLive App, you can group screens so they are representative of your messaging and create user and group profiles.

Personalise your launcher page

- Group by subject, schools, age group, campus, district and more - it's totally flexible
- Show the apps you want. Either from the Cleverstore, or add your own
- Lockdown settings so teachers have to stay within your guidelines
- Add your school logo, colours and background images
- Custom clocks

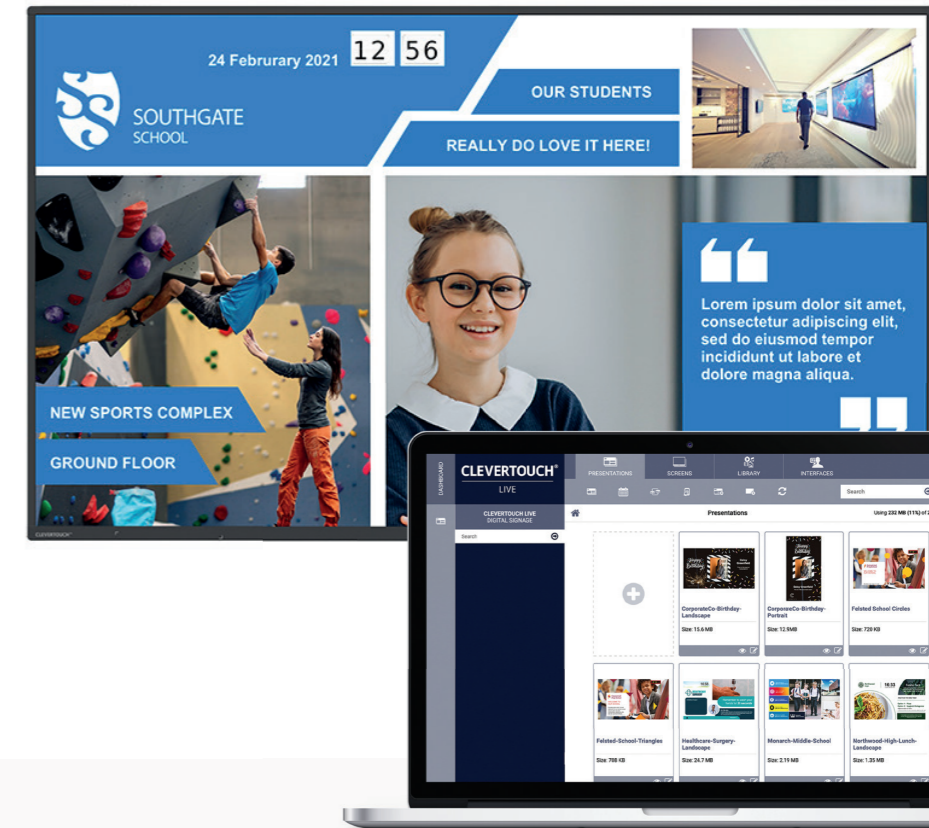
It's simple!

- 1** Go to ClevertouchLive
- 2** Sync your IMPACT screen
- 3** Choose your UI layout





Create teacher or group profiles
 Log into any connected screen in your district and get your apps, home screen, settings and more.



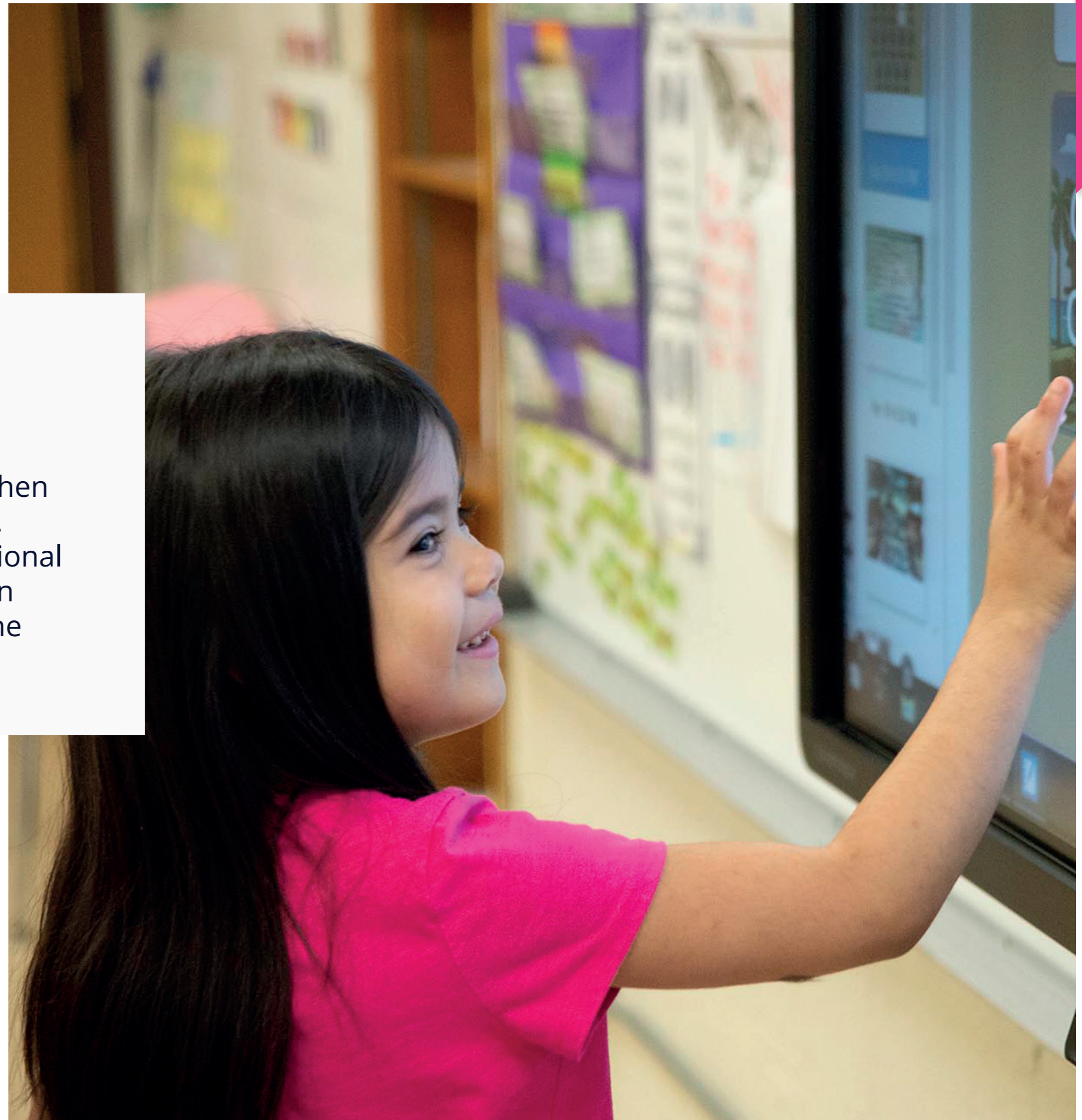
Dynamic and integrated

ClevertouchLive

ClevertouchLive is the Content Management System Platform (CMSP) for all Clevertouch Technologies innovations.

Personalise your launcher page

- Display digital signage messaging when it's not in use.
- Add apps from the Cleverstore or upload your own apk files – send to all your interactive displays without needing to manually install them on individual screens.
- Send alerts and announcements to your audience.
- Weather warnings, stranger alerts, fire alarms.
- Call staff/students to other locations.



Increase Student Engagement

Cleverstore

It's easy to hold students' attention when there's something new on the screen. We've hand-picked apps from educational app developers that support Common Core State Standards in the US and the National Curriculum in the UK.

Apps for everyone

With apps for all ages and in most subjects, there are loads to choose from to help support your lessons. From Coding to Math, Literacy, and Science, as well as games and stories, Cleverstore has everything you could need.

Dual language

Not only are most of our apps available in a variety of languages, but some also support dual language, allowing you to teach languages such as French, Spanish, and German as you go along.

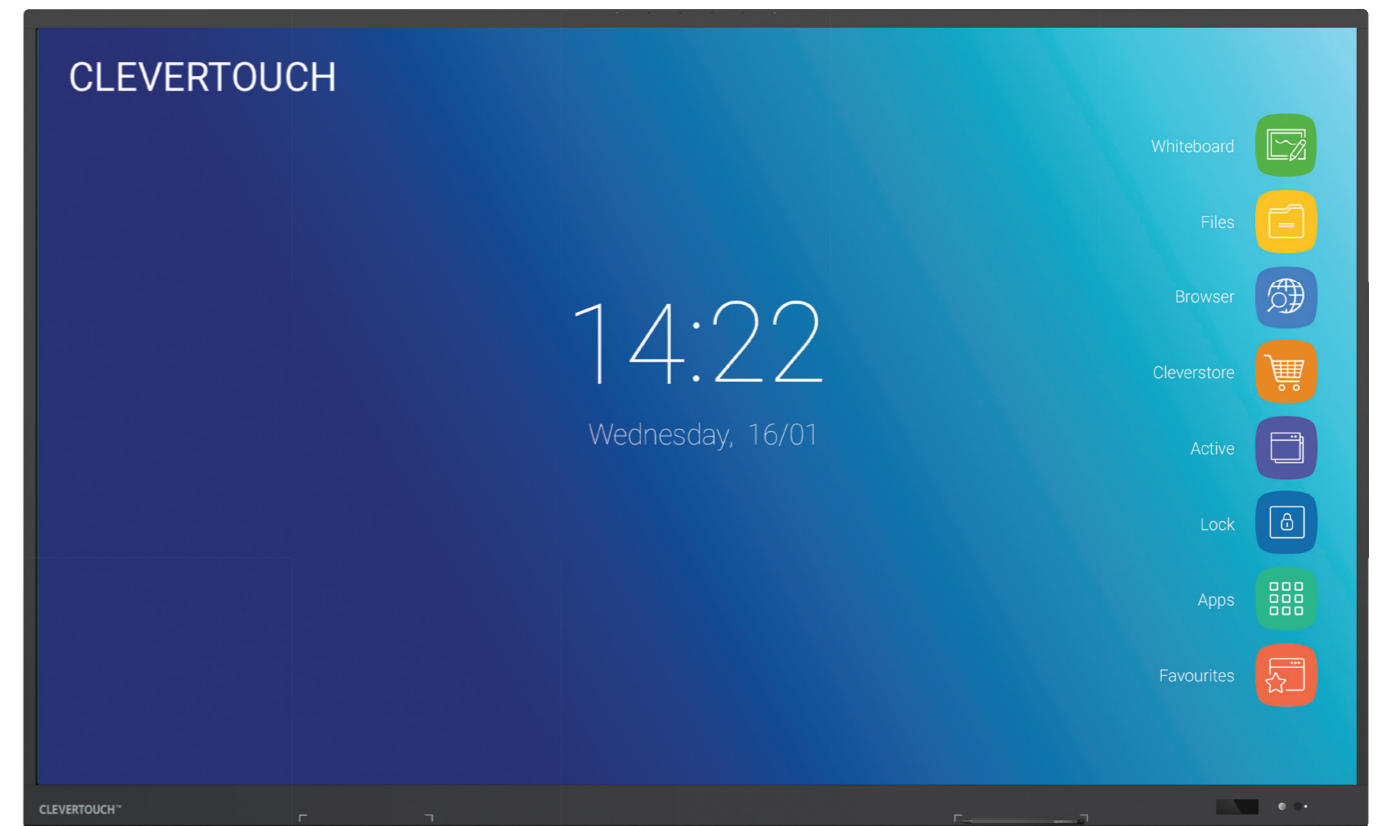
A store you can trust

Our App Team checks every app that's submitted to the store so there is no inappropriate content. We want to enable teachers to download apps as lesson resources – so all apps are suitable for the classroom.

Clevershare

Collaborate with ease - connect up to 50 devices, including phones, tablets and laptops. Screen mirror with images, video and audio.

With touch-back for two-way control, the presenter has full control over what is shared and can show 6 screens simultaneously, increasing collaboration and participation within every session.



Share content with any device

Up to 50 devices can connect with the Clevertouch screen and share content – images, video, and audio. Now with touch-back for two-way control.

The presenter has full control over what is shared and can show up to 6 device screens simultaneously, increasing collaboration and participation within every session.

Mastering Mode

This optional mode will allow you to manually accept or reject from the Clevertouch screen when someone attempts to connect via Clevershare.

Chromecast and Airplay

There is an optional button you can swipe in the settings that will allow you to natively connect your device this way.

Clevershare App

Any device can download the Clevershare App and connect instantly by typing in the code on the Clevertouch screen. Clevershare App is free to download and compatible with Android, Windows, iOS, and Chrome devices.

Clevershare Dongle (optional extra)

Use the USB-C Clevershare dongle to share content. No need to download any app or driver, so ideal for companies that do not allow downloads to devices.

How to connect

You can connect via the Clevershare App if your device is on the same Network as the Clevertouch. Use Advanced Mode for additional encryption and dual sub-networks. There is a Hotspot option if you are unable to use the network.



Optional Extra



Clevershare Dongle

- USB-C connection
- Compatible with IMPACT Plus
- Works in conjunction with the Clevershare App

Clevershare App

- Works on any device
- Free to download
- Compatible with Android, Windows, iOS & Chrome Devices

With AirServer you can mirror content from your personal device to the Clevertouch panel without needing to download an app.

Key Features

AirPlay

Used by macOS, iOS and iPadOS devices.

AirServer has support for AirPlay mirroring, media as well as audio-only streams.

Bluetooth discovery.

Support for PIN, password, and on-screen prompt for incoming connections.



Google Cast

Used by Android and Chrome OS devices and is included in Chrome and Edge browsers.

AirServer has support for both Google Cast mirroring and media (casting from apps).

Casting from apps is also available from iOS and iPadOS. DRM protected content is supported if the host device has DRM support.

Google Cast has no PIN support, but AirServer has a prompt option to accept connections.

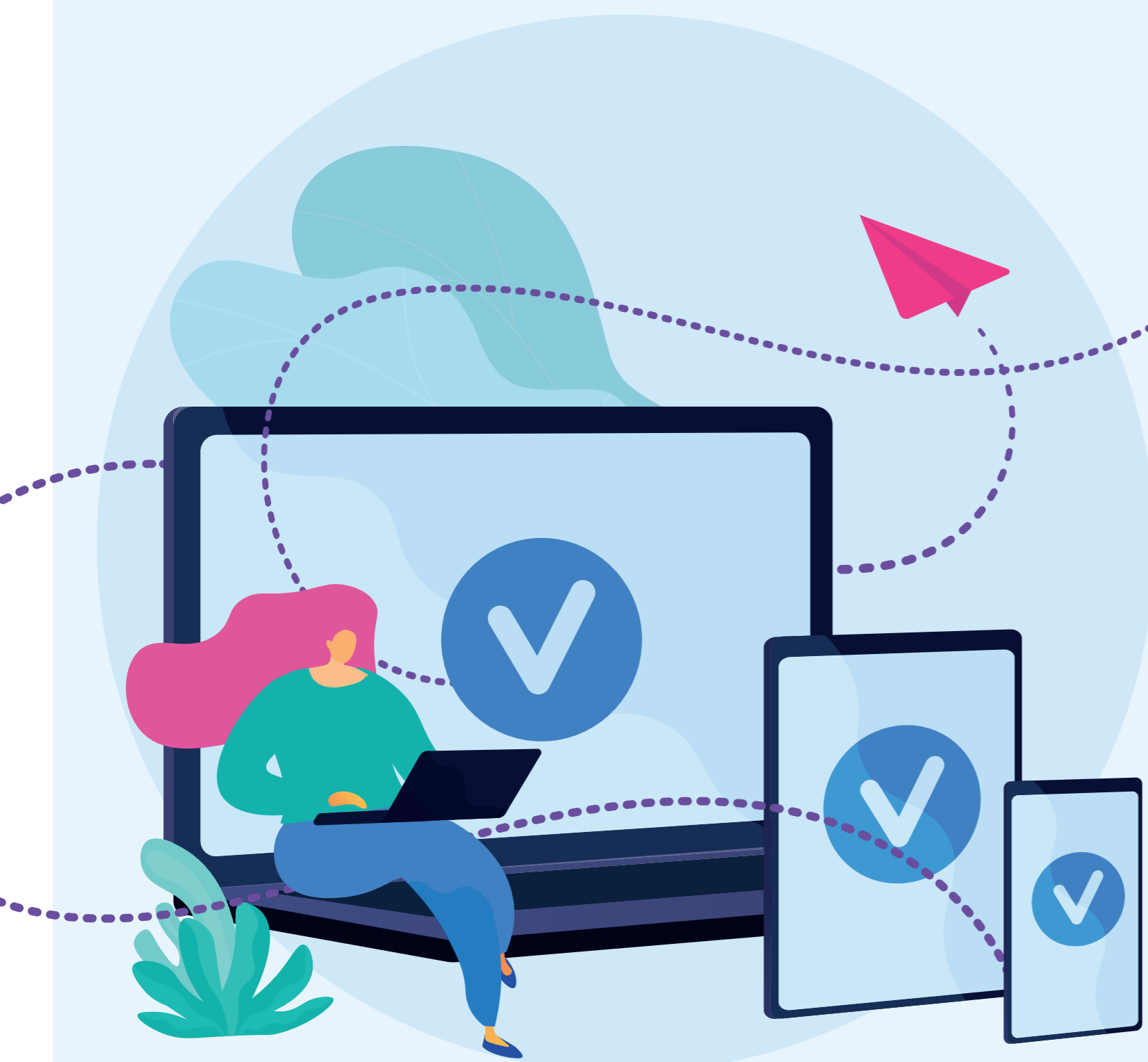


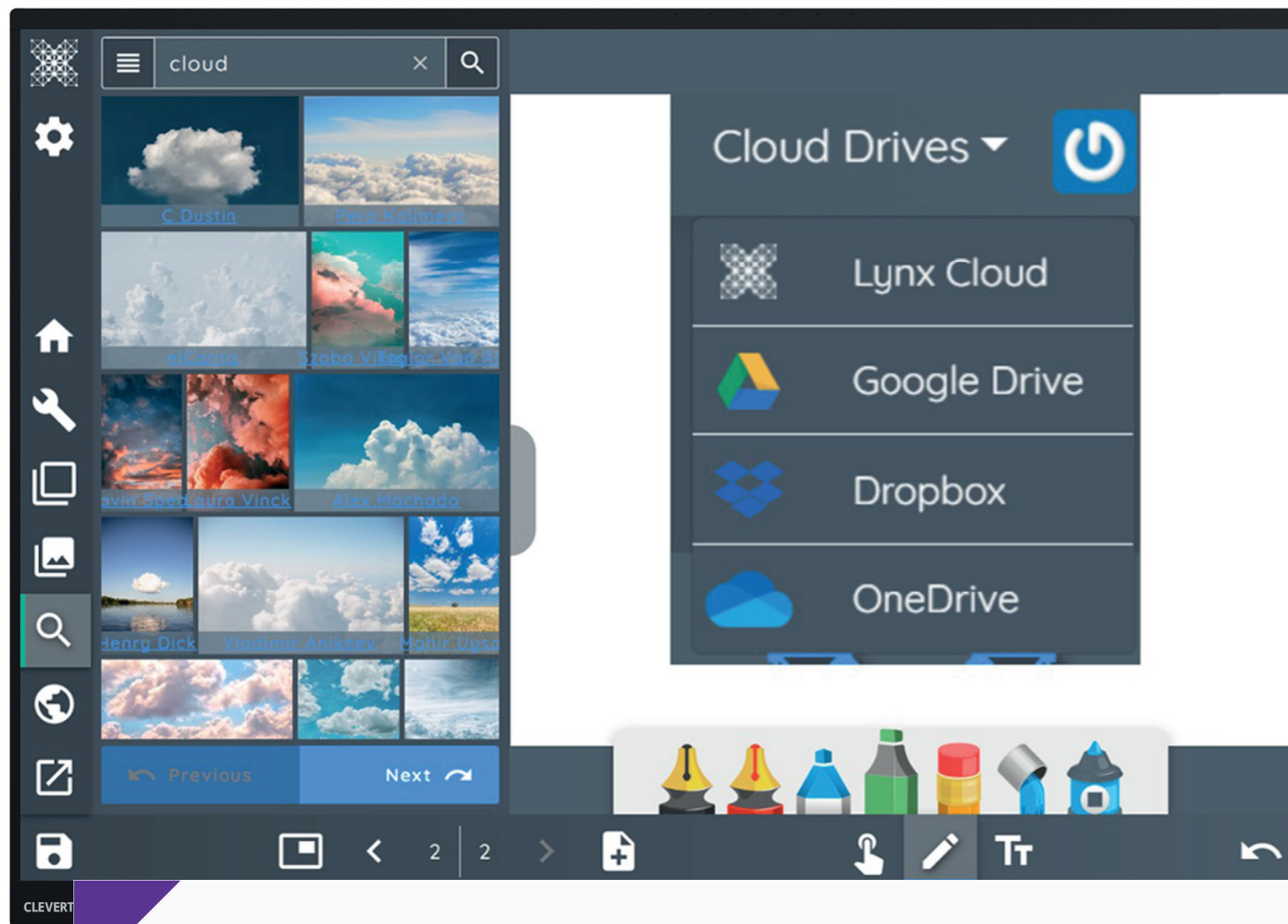
Miracast

Used by Windows 10 devices as well as some Android devices (Samsung, LG, Huawei and more).

AirServer has support for UIBC (touchback) and hardware cursor that transmits the mouse cursor separately to reduce perceived latency.

Support for PIN code and on-screen prompt for incoming connections.





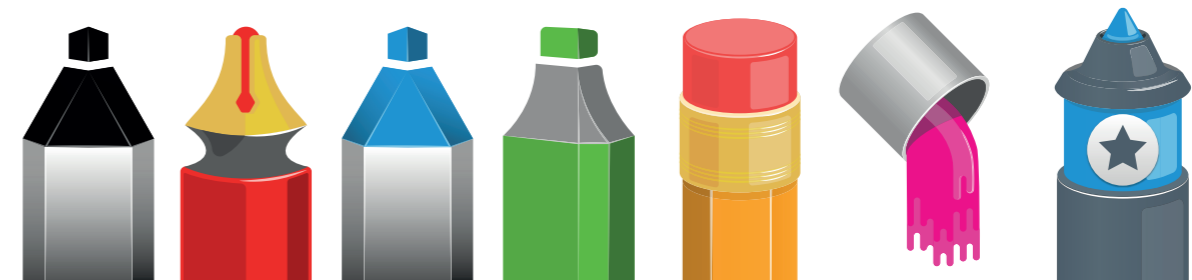
Whiteboarding made easy with a huge selection of pen & art tools to choose from

LYNX Whiteboard

The most dynamic, intuitive user experience of any whiteboard – completely redesigned for a touchscreen, with drag and drop, pinch to zoom, and easy swipe menus.



LYNX Whiteboard has now partnered with PhET to give you over 80 FREE STEM activities to use in your classroom or set as homework.



Captivating Lessons

Natural handwriting

Our new pen type allows users to have a more natural feel to their writing. Pressure and velocity will help to decide the thickness of the line as the user writes – like a real pen.

Multi-Purpose

Split the screen so that you can look online while your lesson is open, and drag content across.

Dual Pen

Two users can choose different pens, or different tools, and use them simultaneously, providing a more natural feel.

Increase student Engagement

Search videos from YouTube, images from Unsplash, panoramic images – all without leaving your app. Safe Search enabled, ensuring content is suitable for children.

Get Creative

With dozens of teaching tools at your fingertips.

Fun, Shareable Activities

Create your own activities with customizable content. Activities will automatically be saved to your LYNX Cloud, so that you can share them with colleagues.

Collaborate with ease

Students can scan a QR code with their personal device and either join the activity during the lesson, or save it to do at home.

Quickly switch formats

Convert files from Office formats into LYNX files, ready to be used within LYNX. Word, Excel and PDF files can easily be converted. Drag interactive whiteboard or Smart Notebook files in bulk and they will automatically convert into a LYNX file.



Cloud access for distant learning with LYNX Whiteboard

Hundreds of tools to increase student engagement in a blended learning environment.

Access the cloud & Log in from anywhere

Create lessons on the go, at home, or in another classroom, on any device.

Your school can set up a LYNX Cloud account, so content and resources can be shared.

Great for distance learning

Set work, deploy and give students their own log-ins.

Download & Upload

Log into any Clevertouch and download your LYNX files, great if you aren't in your usual classroom.

Set Homework

Set homework activities for your students

Sync with other cloud-based drives

Get content from Dropbox, OneDrive, LYNX Cloud or Google Drive and input it directly into your lessons





Snowflake

Educational software that brings interactivity to your school and boosts classroom engagement by using Smarter Human Interaction. Snowflake enables teachers and students to tell engaging, interactive stories that align closely with the curriculum, it provides a safe community for online and small group collaboration, and it allows simultaneous personalised instruction making curriculum relevant to students' lives.



Zones

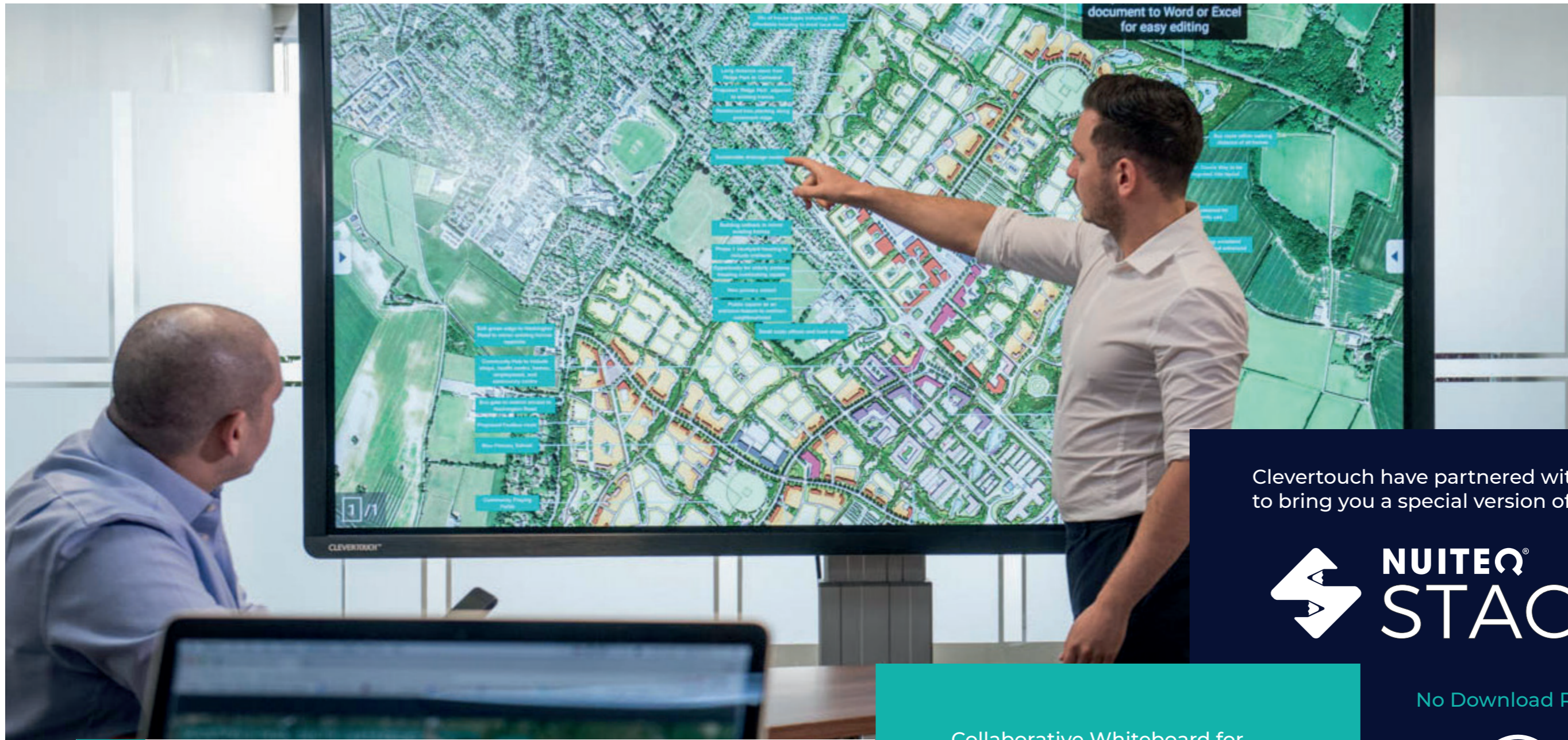
Snowflake is the only educational technology software allowing you to divide your touchscreen into independent, personalised zones. Snowflake transforms the classroom into a fun, motivating, and engaging active learning environment.

Personalised Learning

Together with its online version, Snowflake creates an active learning system well adapted to personalised learning. It enables educators to choose the teaching resources that work best for their students and display different content and activities in a different Zone.

Providing the right scaffolds

Every age and subject has different needs; Snowflake offers a unique configurator that allows the schools' IT Administrator to select the appropriate scaffolds of both tools and content their teachers need.



Stage Lite

Stage is a hassle-free unified communications solution designed for both on-site and distributed teams. Its clean interface and intuitive functionalities constitute a tool that makes collaboration easy and work more efficient.

Clevertouch have partnered with NUITEQ to bring you a special version of STAGE.

Collaborative Whiteboard for hybrid working and learning

Work together in real-time to annotate documents and create whiteboards.

Chat
There's an inbuilt text-chat feature.

Import Lessons
You can import lessons from Snowflake and work on them together

Browser Based
Anyone can join, as long as they have the meeting code - there's no need to download any software

No Download Required!

Get started today in 3 simple steps:

- 1 Visit [Stg.Live](#)
- 2 Enter your code
- 3 Start Collaborating



Take Control

Remote Management

IT departments & administrators can take control, without needing to leave their office. Control multiple Clevertouch devices by linking your entire fleet of Clevertouch screens to your Remote Management MDM account, so that you can control them from anywhere.



Update or remove apps

With the functionality to add .apk files to some or all of your Clevertouch displays, your organisation can always have the latest apps available to use.

Over-The-Air updates

Our OTA updates are just one click away to get the latest firmware on your screen. We will never charge you for firmware updates.

View status information

IT managers can troubleshoot without needing to leave their office. Look up individual Clevertouch screens, view the display in realtime, edit settings, or restart devices remotely.

Group and tag

If you have a group of screens being used by a certain department, you can deploy the same apps and settings, so that there is a standardized experience for everyone in that department.



IMPACT Series Gen 2

Quick Comparison Spec

	IMPACT Gen 2	IMPACT Plus Gen 2
Sizes	65" 4K, 75" 4K, 86" 4K	55" 4K, 65" 4K, 75" 4K, 86" 4K
NEW RAM	3GB RAM	6GB RAM
NEW Internal Storage	32G	64GB
4K UHD (3840x2160 @60Hz)	Yes	Yes
Tempered Glass - Mohs Level 7	Yes	Yes
High Precision Technology	Yes	Yes
20 Continuous Touch Points	Yes	Yes
Finger, Gesture & Pen	Yes	Yes
Simultaneous Writing	Yes	Yes
LYNX Whiteboard, Cleverstore	Yes	Yes
Ink-In Tools Via LYNX	Yes	Yes
Dual Recognition Stylus	Yes	Yes
Palm Rejection	Yes	Yes
Annotate Over Any Source	Yes	Yes
Classroom Essential Apps: Includes Whiteboard, Annotate, Timer, Media Players, Browser, Pdf Reader, Screen Record, Spinner, Voting, Maths Tools	Yes	Yes
Compatible With Windows 7 To 10, Windows XP, Linux, Mac, Android, Chrome	Yes	Yes
NEW Android 9 4K Chipset	No	Yes
NEW LUX 9 Powered By Android 9	No	Yes
2 X 15 Watt Speakers	Yes	Yes
NEW Front-Facing Speakers	No	Yes
Super Wide Sound Subwoofer (45w)	No	Yes
NEW 6 Array Microphone	Yes	Yes
OPS Intel PC Slot	Yes	Yes
NEW Zero Bonding	Gen 1	Gen 2
Front-mounted USB-A	No	Yes
NEW 1x USB-C with video, audio, touch, power and hardware optimization – side-mounted	Yes	Yes
NEW 1x USB-C with video, audio, touch, power and hardware optimization and ethernet – front-mounted	No	Yes
NFC Sensor (via optional extra hardware)	Yes	Yes
NEW Environmental Sensors (via optional Intelligent Camera)	No	Yes
NEW 4K Camera with swivel view (via optional Intelligent Camera)	No	Yes
Motion Sensor	No	Yes
NEW Ambient light sensor	No	Yes
Clevershare Hardware Integrated	Yes	Yes
True 4K User Interface	No	Yes
Super Cool Stylus	No	Yes



Why Choose Clevertouch Technologies?

- ✓ Trusted Brand
- ✓ No ongoing cost
- ✓ Free training
- ✓ Part of a Digital Ecosystem of products – control them all from one online platform
- ✓ Supports Remote Learning
- ✓ Dedicated Support Team
- ✓ Free updates and new features

Display

Diagonal Size	55" 4K, 65" 4K, 75" 4K, 86" 4K
Screen Type	TFT LCD - Direct LED Backlight
Aspect Ratio	16:9
Display Colours	1.07 Billion (10bit)
Resolution	4K UHD (3840 x 2160)
Response Time	5ms
Refresh Rate	60Hz
LCD Viewing Angle	178°
Brightness	450 cd/m2
Contrast Ratio	55" 4500:1 65" 4500:1 75" 4500:1 86" 4500:1
Dynamic Contrast Ratio	55" 5000:1 65" 5000:1 75" 5000:1 86" 5000:1
Glass Hardness	AG Tempered Glass - Mohs Level 7
NEW Glass Type	Low Parallax Zero Bonding - Heat tempered - Anti Glare - Super Glide Surface
NEW Main Board	9950 MTK (MStar)
Life of Screen	50,000 hours

Interactivity

Writing Technology	High Precision IR Technolgy
Continuous Touch Points	20
Touch Resolution	32768x32768
Response Time	≤5ms
NEW Touch Accuracy	1mm
Minimum Object Size	3mm
Touch Tool	Finger, Gesture, Passive Infrared pen
Simultaneous Writing	Yes
Ink In Tools	Yes - LYNX
Pens Included	2
Pen Type	Dual Recognition Stylus
Pen Holder	Integrated Full-length Pen Tray
Pen Tip Diameter	3mm/7mm
Pen & Touch Differentiation	Yes
Pen Identities	2
Palm Rejection	Yes
Annotation Over Any Source	Yes
Classroom Essential Apps	Includes Whiteboard, Annotate, Timer, Media Players, Browser, PDF Reader, Screen Record, Spinner, Voting, Maths Tools
Compatibility	Windows 10, Linux, Mac, Android, Chrome
Tracking Rate	6m/s
Scan Rate	200Hz
Gestures & Edge Swipes	Windows Supported, OSX with additional Driver

Connectivity

OPS Slot	1 - Intel® spec 80Pin
HDMI In	3
HDMI Out	1
USB-A 2.0	1 (1 USB for system upgrade)
USB Touch (type B)	2
NEW USB A 3.0 (Faster Data Transfer)	4
NEW USB C	1x USB-C with video, audio, touch, power and hardware optimisation and ethernet – front-mounted (Supports 65W Charging) 1x USB-C with video, audio, touch and hardware optimisation – side-mounted
LAN In (RJ45)	1
NEW LAN Out (RJ45)	1
RS-232	Yes
Wake-on-Lan	Yes
NEW Wireless Adapter 2.0 + WAP	Upgraded
NEW Bluetooth	Yes – 5.0
VGA In	1
Audio In	1 (3.5mm)
Optical Out	1 (Coax)
Headphone	1 (3.5mm)
Total touch out ports	2
NFC Reader / Writer	Optional Extra
Camera	Optional Extra
Proximity Sensor	Yes
WiFi	IEEE 802.11a/b/g/n/ac with 2 × 2 MIMO (hotspot only) (both 2.4 and 5 GHz bands)
WiFi Speed	Capable of speeds up to 433Mbps

Computing

NEW Operating System	Android 9
NEW System Version	LUX 9
NEW RAM	6GB
NEW Internal Storage	64GB
NEW CPU	Quad Core A73
NEW GPU	Mali G52MC2
Android Resolution	4K
Integrated LUX UI	Yes

Audio

Dual Front Facing, Bass Enhanced Speakers	2 x 15 Watt Speakers + 15 Watt Subwoofer
Audio Out	Yes
SPDIF / Fibre	Yes
Sound Channel	2.1
NEW Line Array Microphone 6 (noise cancelling)	Yes – Omni-directional up to 8 meters
Super Wide Sound	Yes

Power

Power Requirements	100 - 240 ~ 50/60Hz 3.5A
Power Consumption (Normal)	55" 102W 65" 117W 75" 145W 86" 168W
Power Consumption (Standby)	< 0.5 Watts
Ultra Quiet Fanless Design	Yes

Operating & Storage Environment

Operating Temperature	0° to 40°
Storage Temperature	-20° to 60°
Operating Humidity	10% to 90% RH
Storage Humidity	10% to 90% RH
Altitude	Below 5000 metres

Physical Specifications

Panel Dimensions	55" 1262x794x89mm 65" 1488x920x90mm 75" 1709x1043x89mm 86" 1957x1182x86mm
Packed Dimensions	55" 1428x220x902mm 65" 1628x208x1024mm 75" 1860x280x1163mm 86" 2112x280x1304mm
Net Weight	55" 27.7Kg 65" 37.3Kg 75" 51.1Kg 86" 63.8Kg
Packed Weight	55" 33.9Kg 65" 45.7Kg 75" 63.9Kg 86" 78.9Kg
VESA Mount Point	55" 400x200mm 65" 400x200mm 75" 800x400mm 86" 800x600mm

Warranty

Warranty term and upgrade options vary by region. Contact your local reseller or distributor for information and visit clevertouch.com/about/warranty

Compliance & Certification

Regulatory Certification CE, FCC, UL, Energy Star & EEC



IMPACT™ Built-in Features

LYNX™ App With Online Lesson Planning	Yes
Cleverstore™ App Store For Education	Yes
Embedded Digital Signage	Yes
Clevershare™ Mirroring Any Device To The Board	Free for the life of the screen (touch back)
Integrated Personalised Accounts Profiles	Yes
Cloud Account Access	OneDrive Google Drive
Embedded Room Booking	Yes
Whiteboard Annotation	Yes
Email Out Direct From Touchscreen	Yes
Scan QR Code For Saving Work	Yes
CleverMessage™ – Instant Alert Messaging	Yes
Over-the-Air Updates	Yes
Remote Management Of Touchscreens (MDM)	Yes - Five year license
What's In The Box	(1) Clevertouch IMPACT Plus 2™ (1) 1.5M Length HDMI Cable (1) 3M Length USB cable (A-B) (2) 1.5M USB-C Cable (1) 3M Regional Power Cable (1) 5M 3.5mm Audio Cable (1) Remote Control (2) Batteries for Remote Control (2) Dual Recognition Stylus (1) User Guide (1) Quick Install Guide (1) Wireless Adapter 2.0 + WAP

Packed Contents - Inside your Clevertouch Box

Installation

The installation of this product should be completed by a qualified installer. Use of components not supplied by Clevertouch or not meeting minimum specifications may impact performance, safety and warranty. For more information, visit clevertouch.com

Support

For all Clevertouch products, visit: support.clevertouch.com

Display

Diagonal Size	65" 4K, 75" 4K, 86" 4K
Screen Type	TFT LCD - Direct LED Backlight
Aspect Ratio	16:9
Display Colours	1.07 Billion (10 bit)
Resolution	4K UHD (3840 x 2160)
Response Time	5ms
Refresh Rate	60Hz
LCD Viewing Angle	178°
Brightness	400 cd/m2
Contrast Ratio	65" 4000:1 75" 4000:1 86" 4000:1
Dynamic Contrast Ratio	65" 5000:1 75" 5000:1 86" 5000:1
Glass Hardness	Tempered Glass - Mohs Level 7
NEW Glass Type	Low Parallax 1mm Air Gap - Heat tempered - Anti Glare - Super Glide Surface
Main Board	MS848 - MStar
Life of Screen	50,000 hours

Interactivity

Writing Technology	High Precision IR Technology
Continuous Touch Points	20
Touch Resolution	32768x32768px
Response Time	≤5ms
Touch Accuracy	1.5mm
Minimum Object Size	3mm
Touch Tool	Finger, Gesture, Passive Infrared pen
Simultaneous Writing	Yes
Ink In Tools	Yes - LYNX
Pens Included	2
Pen Type	Dual Recognition Stylus
Pen Holder	Optional Extra
Pen Tip Diameter	3mm/7mm
Pen & Touch Differentiation	Yes
Pen Identities	2
Palm Rejection	Yes
Annotation Over Any Source	Yes
Classroom Essential Apps	Includes Whiteboard, Annotate, Timer, Media Players, Browser, PDF Reader, Screen Record, Spinner, Voting, Maths Tools
Compatibility	Windows 10, Linux, Mac, Android, Chrome
Tracking Rate	6m/s
Scan Rate	200Hz
Gestures & Edge Swipes	Windows Supported, OSX with additional Driver

Connectivity

OPS Slot	1 - Intel® spec 80Pin
HDMI In	3
HDMI Out	1
USB-A 2.0	3 (1 USB port only for system upgrade)
USB Touch (type B)	2
USB A 3.0 (Faster Data Transfer)	3
NEW USB C (Video, Audio & Touch)	1 (Supports 65W Charging)
LAN In (RJ45)	1
RS-232	Yes
Wake-on-Lan	Yes
Wireless Adapter 2.0 + WAP	Yes
Clevertouch WiFi Module	Yes
NEW Bluetooth	Yes - 5.0
VGA In	1
Audio In	1 (3.5mm)
Optical Out	1 (Coax)
Headphone	1 (3.5mm)
Total touch out ports	2
NFC Reader / Writer	Optional Extra
Camera	Optional Extra
Proximity Sensor	No
WiFi	IEEE 802.11a/b/g/n/ac (2.4 and 5 GHz bands)
WiFi Speed	Capable of speeds up to 433Mbps

Computing

Operating System	Android Oreo 8
System Version	LUX 8
NEW RAM	3GB
NEW Internal Storage	32GB
CPU	Dual Core A73+Dual Core A53
GPU	Dual Core Mali G51
Android Resolution	4K
Integrated LUX UI	Yes

Audio

Speakers	2 x 15 Watt Speakers
Audio Out	Yes
SPDIF / Fibre	Yes
Sound Channel	2
NEW Line Array Microphone (noise cancelling)	Yes - Omni-directional up to 8 meters

Power

Power Requirements	100 - 240V 50/60Hz 4.0A
Power Consumption (Normal)	65" 142W 75" 165W 86" 195W
Power Consumption (Standby)	< 0.5 Watts
Ultra Quiet Fanless Design	Yes

Operating & Storage Environment

Operating Temperature	0° to 40°
Storage Temperature	-20° to 60°
Operating Humidity	10% to 90% RH
Storage Humidity	10% to 90% RH
Altitude	Below 5000 metres

Physical Specifications

Panel Dimensions	65" 1489x891x86mm 75" 1709x1013x89mm 86" 1957x1153x86mm
Packed Dimensions	65" 1628x208x992mm 75" 1860x280x1132mm 86" 2112x280x1273mm
Net Weight	65" 39.5Kg 75" 53Kg 86" 67.7Kg
Packed Weight	65" 49.7Kg 75" 62.8Kg 86" 80.8Kg
VESA Mount Point	65" 600x400mm 75" 800x400mm 86" 800x600mm

Warranty

Warranty term and upgrade options vary by region. Contact your local reseller or distributor for information and visit clevertouch.com/about/warranty

Compliance & Certification

Regulatory Certification CE, FCC, UL, Energy Star & EEC



IMPACT™ Built-in Features

LYNX™ App With Online Lesson Planning	Yes
Cleverstore™ App Store For Education	Yes
Embedded Digital Signage	Yes
Clevershare™ Mirroring Any Device To The Board	Free for the life of the screen (touch back)
Integrated Personalised Accounts Profiles	Yes
Cloud Account Access	OneDrive Google Drive
Embedded Room Booking	Yes
Whiteboard Annotation	Yes
Email Out Direct From Touchscreen	Yes
Scan QR Code For Saving Work	Yes
CleverMessage™ - Instant Alert Messaging	Yes
Over-the-Air Updates	Yes
Remote Management Of Touchscreens (MDM)	Yes - Five year license

Packed Contents - Inside your Clevertouch Box

What's In The Box	(1) Clevertouch IMPACT 2™ (1) 1.5M Length HDMI Cable (1) 3M Length USB cable (A-B) (1) 1.5M USB-C Cable (1) 3M Regional Power Cable (1) Remote Control (2) Batteries for Remote Control (2) Dual Recognition Stylus (1) User Guide (1) Quick Install Guide (1) Clevertouch WiFi Module
-------------------	--

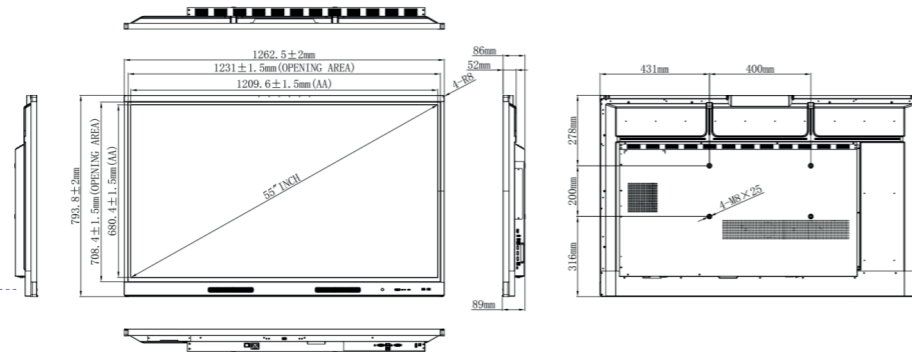
Installation

The installation of this product should be completed by a qualified installer. Use of components not supplied by Clevertouch or not meeting minimum specifications may impact performance, safety and warranty. For more information, visit clevertouch.com

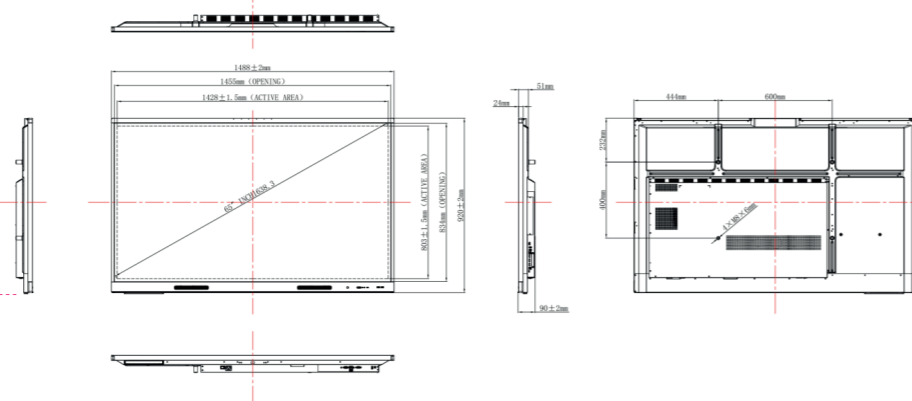
Support

For all Clevertouch products, visit: support.clevertouch.com

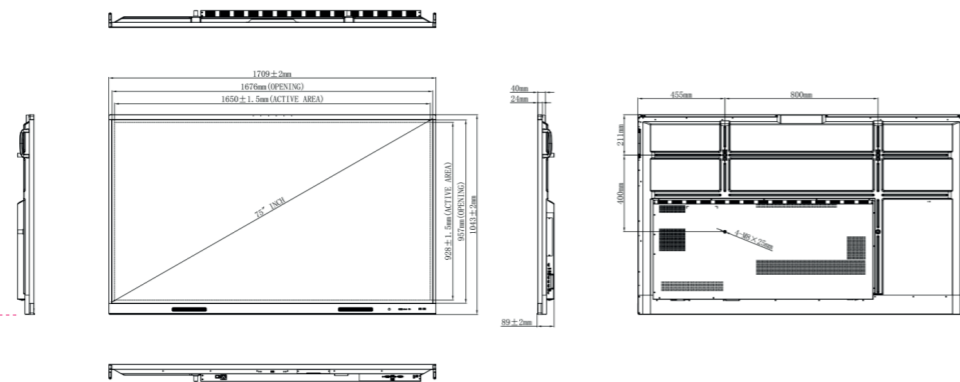
55"



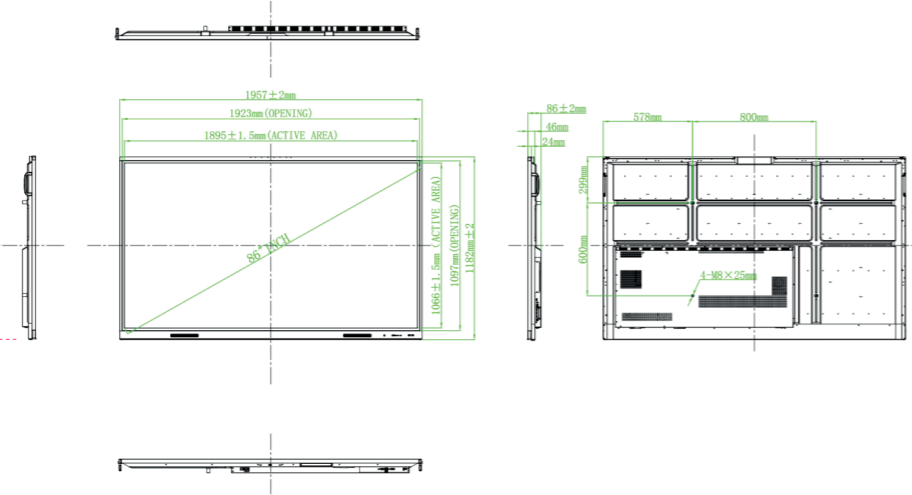
65"



75"

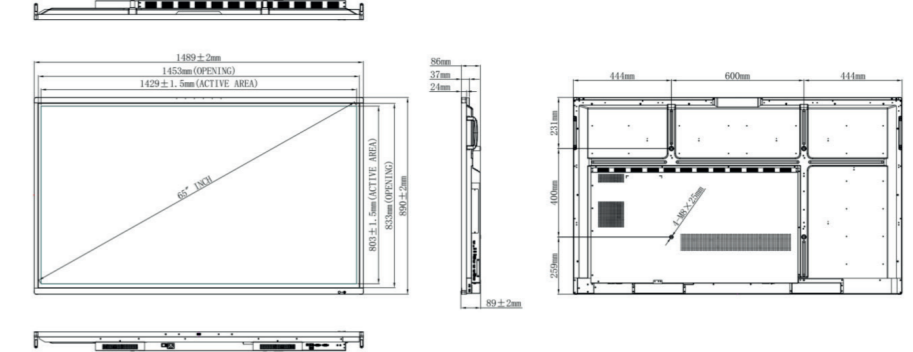


86"

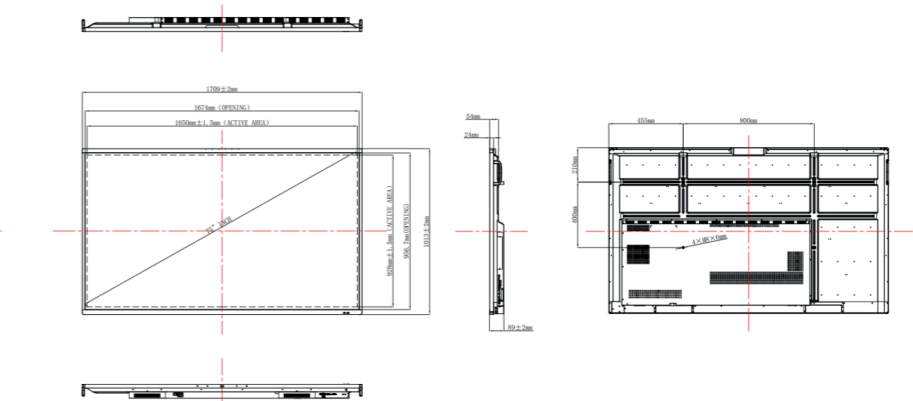


IMPACT PLUS GEN 2

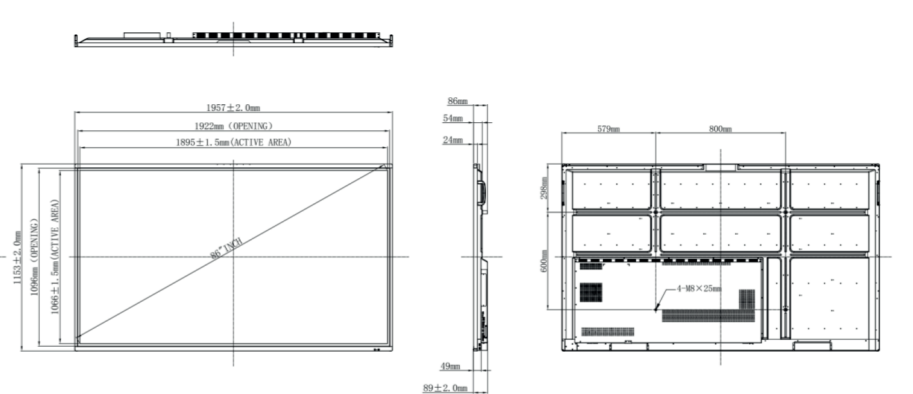
65"



75"



86"



IMPACT GEN 2

Digital Ecosystem

A unique digital solution for every space which redefines the way to distribute information and collaborate using technology.

DIGITAL ECOSYSTEM

Reception Foyer Digital Signage
Engagement Messaging

Way-finding
Directional Screen Branding

Commercial Displays
Inform / Educate / Promote

Infinity Whiteboard
Create documents anywhere, with LYNX Whiteboard

Room Booking
Centralised Room Booking Panels

One-touch updates
Control what's on the screen from your mobile device

QR Codes
Enhance your audience experience with interactive QR Codes in presentations.

Screen Mirroring
With Clevershare connect with any device, on any network. Includes touchback for two-way mirroring.

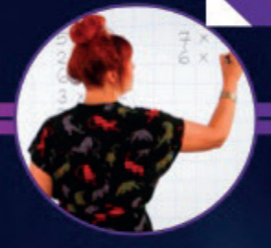
Remote Management
Allow your IT department to remotely take control and troubleshoot or make updates.

Unified Communications
Collaborate via video an real-time whiteboard with Zoom and Teams with one-touch launch of your preferred UC platform

Interactive Collaborative Displays

Cloud Accounts
Integrate with Google Workspace or Microsoft 365

Our products work together to help your school function smarter!



CLEVERTOUCH[®]
TECHNOLOGIES

clevertouch.com



Contact us for
more details

info@clevertouch.com